

Pulley Chart

Recommended pulley sizes for gasoline engines and electric motors. Your machine specifications may differ from these.

3400-3450RPM engine/motor

RPM	3400	1750	1450
Pump	4.25	7.75	7.75 8.75
Motor	4.25	3.95	3.35 3.75

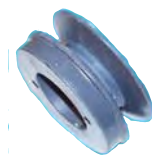
1725 RPM electric motors

RPM	1750	1450	1125	1100	1050	950	750
Pump	4.75 6.75	6.75 4.95	7.75 6.75	6.75 7.75	7.75	7.75 6.75	7.75 8.75
Motor	4.95 6.75	5.75 4.25	4.95 4.45	4.25 4.95	4.75	4.25 3.75	3.35 3.75

Pulley Sheaves

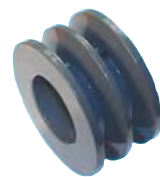
Single Groove

Part	Model	OD
3948	BK34H	3.55"
3949	BK40H	3.95"
3950	BK45H	4.25"
3951	BK47H	4.45"
3952	BK52H	4.95"
3953	BK55H	5.25"
3956	BK70H	6.75"
3957	BK80H	7.75"



Double Groove

Part	Model	OD
3959	2BK32H	3.35"
3961	2BK36H	3.75"
3808	2BK40H	3.95"
3962	2BK45H	4.25"
3963	2BK47H	4.45"
3964	2BK50H	4.75"
3965	2BK52H	4.95"
3970	2BK70H	6.75"
3971	2BK80H	7.75"
3828	2BK90H	8.75"



Double

H-Bushings

Part	Size	Part	Size
3855	5/8"	3976	20mm
3812	3/4"	4105	22mm
3813	7/8"	3811	24mm
3810	1"	3815	25mm
3814	1-1/8"	3977	28mm
3972	1-3/8"	3978	30mm
4739	1-7/16"	3816	32mm
		3817	35mm



Bushing

Ground Faults (GFCI)

User Attachable Right Angle

- NEMA5-15P
- Accepts cord SJT to 12 AWG
- Outdoor rated
- UL & CSA approved

Part	Product
2291	120v/15amp
3593	125v/20amp



Shock Shield User Attachable

- No switches or wires to change automatically senses input voltage
- UL & CSA approved
- 2 tubes of sealant included

Part	Product
2293	115/240v 15/20a
6681	120v 20a



Heavy Duty In-Line Cord

- Outdoor rated
- UL & CSA approved
- NO PLUG ON 220 volt cords**
- 3 HP motor maximum



Part	Product
5549	110v/15amp 36' cord
5550	110v/20amp 36' cord
3689	220v/30amp 25' cord

Pressure Gauges



- 2-1/2" face
- 1/4" MPT stem
- 140°F. maximum
- Glycerine filled

Part	PSI	Type
2426	0-3000	Stainless steel
2427	0-5000	Stainless steel
2468	0-5000	Back mount
5449	Back	Mount bracket
6422	0-8000	Stainless Steel
6197	0-10000	Stainless steel



2468

Vacuum Gauge

- 2-1/2" Face plate
- 30 Hg graduation
- 1/4" stem

Part
4744



Fuel Pressure

- 0-300 PSI
- 2" face plate
- 1/4" mpt brass stem

Part
2423



Temperature

- 50° to 400° F.
- 3000 PSI
- 2" face plate
- 1/4" MPT
- Stem 2-1/2"

Part
2428



Temperature Test

400°F. maximum

Part
6620



Pressure Test

5000 PSI Quick connected pressure gauge for quick testing of pumps during repair and installation of new equipment. *Steel quick connect plug, NOT BRASS.*

Part
5744



Pressure/Temp Test

Test pump pressure up to 3000 PSI, and water temperature to 176°F. 3/8" quick connects for easy testing.

Part
3509



Fuel Pressure Test

Fuel pump pressure testing is simple with this adapted gauge. Test from up to 300 PSI.

Part
2422



Inline Fuel Filters



Part	Product
3056	1/4" metal filter
3057	5/16" metal filter
1559	5/16" plastic filter

Briggs Engine Filters

Oil Filter



Part	Briggs No.
1511	491056 3" high

Round Air Cleaners



1503

4.25" dia x 3.75" high
For 7 to 16 HP horizontal engine



1504

Part	Briggs No.
1503	393957 air cleaner
1504	271794 pre cleaner

7.25" dia x 2.25" high
For (L Head), horizontal, vertical, twin, v-twin, & OHV Vanguard



1508

Part	Briggs No.
1508	394018 air cleaner
1509	272490 pre cleaner

Replacement Air Filters Honda Engines



4055



3781



3782

Part	Filter
3781	GX160-200
3782	GX340-390
4055	GX240-270

Air Cleaner Assembly



5680

Part	Filter
5895	GC Series
5678	GX160-200
5679	GX240-270
5680	GX340-390

GX Fuel Filter & Holder



5592

Part
5592

All parts for Honda engines are after market and not original Honda parts

Fuel Tanks & Accessories

Tanks have cap, filter and joint



Part	Product
5589	Fuel tank GX160, GX200
5590	Fuel tank GX240, 270, 340, 390
5666	Fuel hose GX240-270-340-390
5667	Fuel tank joint GX series
5657	Fuel tank cap GX series (poly w/gasket)
5898	Gas Cap Chrome GX

Carburetors

Part	Product
5760	GX160
5761	GX200
5768	GX240
5777	GX270
5787	GX340
5791	GX390



Head Gasket

Part	Product
5792	GX160
5793	GX200
5794	GX240
5795	GX270
5798	GX340
5799	GX390



Gasket Kit

Includes crankcase, exhaust and 3 carb gaskets

Part	Product
5800	GX160
5801	GX200
5802	GX240
1037	GX270
5803	GX340
5805	GX390



Throttle Control Assembly

Part	Product
5576	GX160-200
5580	GX240-270
5582	GX 340-390



Control Springs

Part	Product
4177	GX160-200
4178	GX240-270
4179	GX 340-390

Recoil Start Assembly

Part	Product
5690	GX160, GX200
5681	GX240, GX270
5682	GX340, GX390
5577	Handle w/60" cord GX



Electric Start Assembly

Part	Product
5097	GX340, GX390 No solenoid



Ignition Coil Assembly

Part	Product
3827	GX160-200
5692	GX240-270-340
5693	GX340-390



Spark Plug

5809	Spark plug cap (noise suppression) GX
3001	Torch F6RTC plug GX160-GX390
2930	NGK BPR6ES plug (original equip) GX190-GX390



On/Off Switch

Part	Price
5695	1.34



Muffler Accessories



Part	Product
5736	Muffler w/elbow GX160-200
5740	Muffler GX240-270
5741	Muffler GX340-390
5749	Exhaust pipe GX240-270-340-390
5896	Gasket set GX160, GX200
5807	Gasket set GX240-270-340-390
5364	Exhaust deflector GX160-200
2527	Exhaust deflector kit GX240-390

Fan cover Shroud

Part	Product
5472	GX160
5574	GX 240-270
5583	GX200
5584	GX340-390



Connecting Rods

Part	Product
5754	GX160
5755	GX240-270
5756	GX340-390

